

# BED BUGS: KNOW WHAT TO LOOK FOR



Fecal matter on bedding

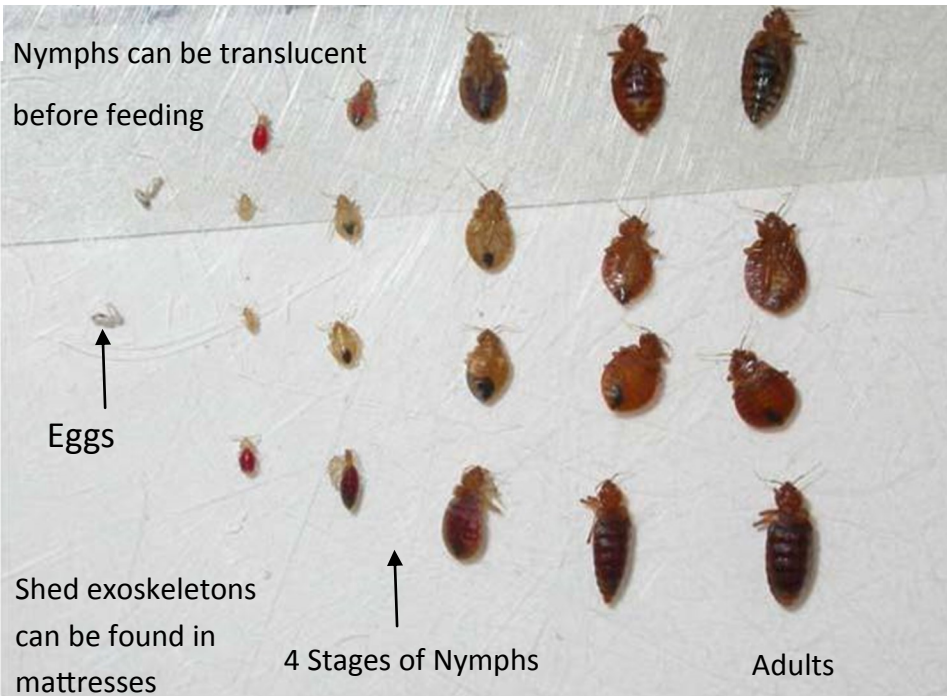


Bites in grouped patterns

Nymphs & Adults compared to size of penny



Appearance of the bug changes throughout the life cycle.



Nymphs can be translucent before feeding

Eggs

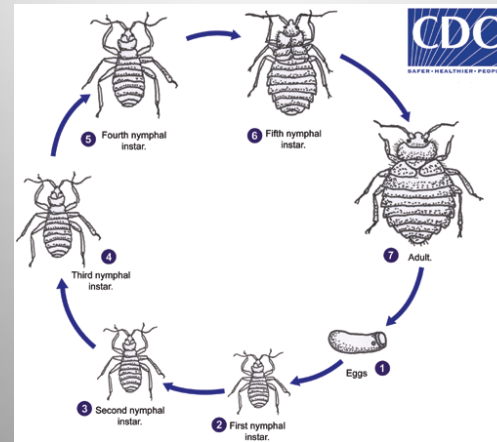
Shed exoskeletons can be found in mattresses

4 Stages of Nymphs

Adults

## Life Cycle

Lay about 5 eggs per day, in a sheltered location (mattress seams, crevices of bed frames, cracks in walls, behind switch covers).



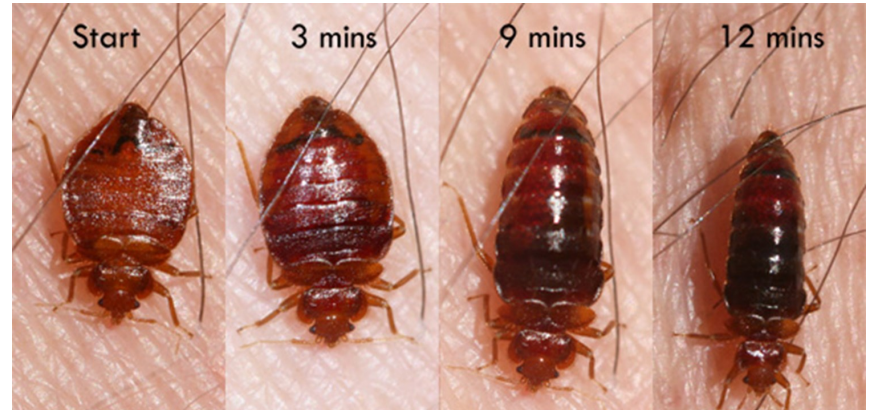
Eggs hatch in 4-12 days. Then proceed through 5 nymph stages.

Nymphs look similar to adults, but smaller.

Need a 5-10 minute blood meal before molting to the next nymph stage.

Adults live 6-12 months and can go long periods of time without feeding

## Appearance of a single adult changes with feeding.



Meigs County Health Department  
112 E. Memorial Drive Suite A  
Pomeroy, Ohio 45769



Phone: (740) 992-6626  
Fax: (740) 992-0836  
www.meigs-health.com